

Contents

P/N: 390712000133 Version: A

1. Technical Feature.....	02
2. Photometric diagram.....	03
3. Control channel.....	04
4. Display panel operational function detail.....	09
5. Control Panel.....	11
5.1 Control panel introduction.....	11
5.2 Control panel operational introduction.....	11
6. Routine maintenance.....	12
7. Safety information.....	13
8. Product Connection.....	14
8.1 Included items.....	14
8.2 Power connection.....	14
8.3 Signal connection.....	15
9. Parts Code.....	16
Attached 1. Fixture exploded drawing	
Attached 2. Wiring diagram	

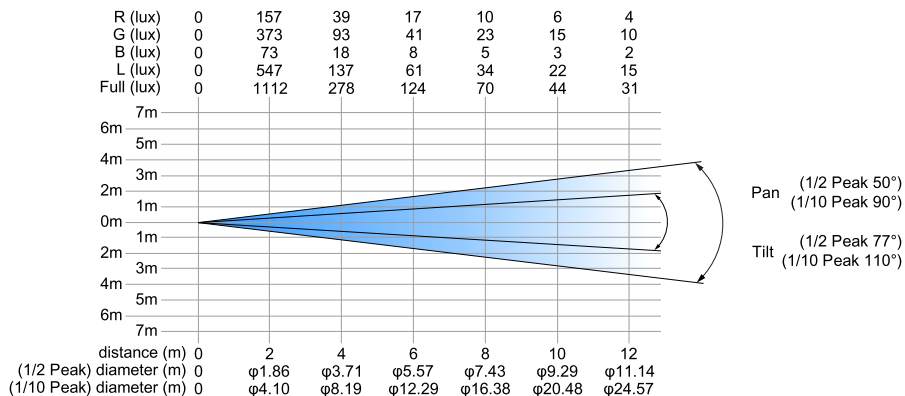
1 /Technical feature

Technical Feature	FINE 150 FT	FINE 75 FT IP
Light Source	LED light source(RGBL)	
Input Voltage	100-240V~ 50/60Hz	
Input Current	2A	0.9A
Input Power	195W	86W
Power Factor	PF \geq 0.95	
Initial Luminous Flux	6600 lm	3100 lm
Safety Protection	Over current, over voltage and overheating	
Channel Control	150 FT: 16(Stand)/10(Simp)/20(Pixels) 75 FT: 16(Stand)/10(Simp)/12(Pixels)	
Control Protocol	DMX512/NFC	
Working Temperature	0°C~40°C	
Fixture Dimension	1003x148.6x130.2mm	511x148.6x130.2mm
Package Dimension	1215*575*570mm	
Weight	Net weight: 11.5 kg Gross weight: 115.5kg	Net weight: 6.3 kg Gross weight: 125kg
Package	5pcs/Flight case	10pcs/Flight case
IP Rate	IP65	

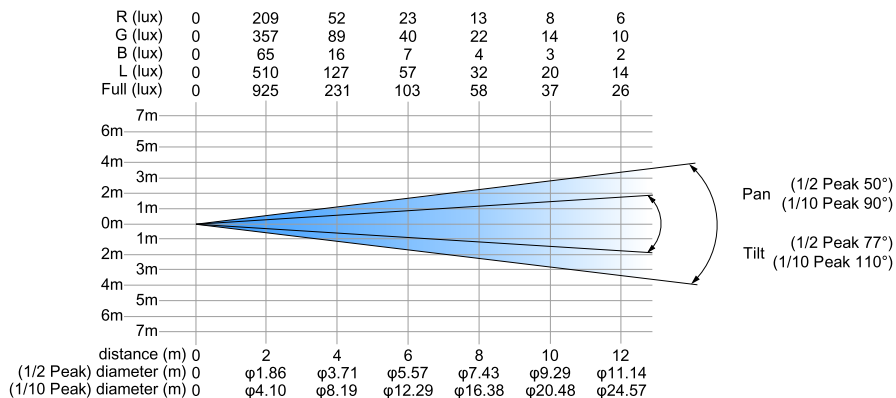
Note: The light source is a non-user replacement light source. If it is damaged or thermally deformed, please replace it!

2 / Photometric diagram

FINE 150 FT IP:



FINE 75 FT IP:



3 /Control channel

FINE150FT IP Stand			
ID	Specific	Value	Function
1	Top Dimmer	0->255	
2	Top DimmF	0->255	
3	Top Red	0->255	
4	Top Green	0->255	
5	Top Blue	0->255	
6	Top White	0->255	
7	BotDimmer	0->255	
8	BotDimmF	0->255	
9	BotRed	0->255	
10	BotGreen	0->255	
11	BotBlue	0->255	
12	BotWhite	0->255	
13	CCT	0->3 None 4 CCT 2500K 5 CCT 3200K 6 CCT 4500K 7 CCT 5600K 8 CCT 6500K 9 CCT 8000K 10->255 CCT 10000K->2500K	
14	ColorMacro	0->27 None 28->127 ColorMacro 128->255 None	
15	Strobe	0->5 Open 6->10 Open (Dimmer Fade OFF) 11->105 Pulse Strobe, from slow to fast (0~20Hz) 106->110 Open (Dimmer Fade OFF) 111->179 Thunder Strobe (0~10Hz) 180->185 Open (Dimmer Fade OFF) 186->253 Random Strobe, from slow to fast 254->255 Open (Dimmer Fade ON)	
16	Ctrl	0->255 Reserved	

FINE150FT IP SIMP

ID	Specific	Value	Function
1	Dimmer	0->255	
2	DimmerFine	0->255	
3	Red	0->255	
4	Green	0->255	
5	Blue	0->255	
6	White	0->255	
7	CCT	0->3 None 4 CCT 2500K 5 CCT 3200K 6 CCT 4500K 7 CCT 5600K 8 CCT 6500K 9 CCT 8000K 10->255 CCT 10000K->2500K	
8	ColorMacro	0->27 None 28->127 ColorMacro 128->255 None	
9	Strobe	0->5 Open 6->10 Open (Dimmer Fade OFF) 11->105 Pulse Strobe, from slow to fast (0~20Hz) 106->110 Open (Dimmer Fade OFF) 111->179 Thunder Strobe (0~10Hz) 180->185 Open (Dimmer Fade OFF) 186->253 Random Strobe, from slow to fast 254->255 Open (Dimmer Fade ON)	
10	Ctrl	0->255 Reserved	

FINE150FT IP Pixels

ID	Specific	Value	Function
1	Dimmer	0->255	
2	DimmerFine	0->255	
3	Bar1 Red	0->255	
4	Bar1 Green	0->255	
5	Bar1 Blue	0->255	
6	Bar1 White	0->255	
7	Bar2 Red	0->255	
8	Bar2 Green	0->255	
9	Bar2 Blue	0->255	
10	Bar2 White	0->255	
11	Bar3 Red	0->255	
12	Bar3 Green	0->255	
13	Bar3 Blue	0->255	
14	Bar3 White	0->255	
15	Bar4 Red	0->255	
16	Bar4 Green	0->255	
17	Bar4 Blue	0->255	
18	Bar4 White	0->255	
19	Strobe	0->5 Open 6->10 Open (Dimmer Fade OFF) 11->105 Pulse Strobe, from slow to fast (0~20Hz) 106->110 Open (Dimmer Fade OFF) 111->179 Thunder Strobe (0~10Hz) 180->185 Open (Dimmer Fade OFF) 186->253 Random Strobe, from slow to fast 254->255 Open (Dimmer Fade ON)	
20	Ctrl	0->255 Reserved	

FINE 75FT IP Stand

ID	Specific	Value	Function
1	Top Dimmer	0->255	
2	Top DimmF	0->255	
3	Top Red	0->255	
4	Top Green	0->255	
5	Top Blue	0->255	
6	Top White	0->255	
7	BotDimmer	0->255	
8	BotDimmF	0->255	
9	BotRed	0->255	
10	BotGreen	0->255	
11	BotBlue	0->255	
12	BotWhite	0->255	
13	CCT	0->3 None 4 CCT 2500K 5 CCT 3200K 6 CCT 4500K 7 CCT 5600K 8 CCT 6500K 9 CCT 8000K 10->255 CCT 10000K->2500K	
14	ColorMacro	0->27 None 28->127 ColorMacro 128->255 None	
15	Strobe	0->5 Open 6->10 Open (Dimmer Fade OFF) 11->105 Pulse Strobe, from slow to fast (0~20Hz) 106->110 Open (Dimmer Fade OFF) 111->179 Thunder Strobe (0~10Hz) 180->185 Open (Dimmer Fade OFF) 186->253 Random Strobe, from slow to fast 254->255 Open (Dimmer Fade ON)	
16	Ctrl	0->255 Reserved	

FINE 75FT IP SIMP

ID	Specific	Value	Function
1	Dimmer	0->255	
2	DimmerFine	0->255	
3	Red	0->255	
4	Green	0->255	
5	Blue	0->255	
6	White	0->255	
7	CCT	0->3 None 4 CCT 2500K 5 CCT 3200K 6 CCT 4500K 7 CCT 5600K 8 CCT 6500K 9 CCT 8000K 10->255 CCT 10000K->2500K	
8	ColorMacro	0->27 None 28->127 ColorMacro 128->255 None	
9	Strobe	0->5 Open 6->10 Open (Dimmer Fade OFF) 11->105 Pulse Strobe, from slow to fast (0~20Hz) 106->110 Open (Dimmer Fade OFF) 111->179 Thunder Strobe (0~10Hz) 180->185 Open (Dimmer Fade OFF) 186->253 Random Strobe, from slow to fast 254->255 Open (Dimmer Fade ON)	
10	Ctrl	0->255 Reserved	

FINE75FT IP Pixels

ID	Specific	Value	Function
1	Dimmer	0->255	
2	DimmerFine	0->255	
3	Bar1 Red	0->255	
4	Bar1 Green	0->255	
5	Bar1 Blue	0->255	
6	Bar1 White	0->255	
7	Bar2 Red	0->255	
8	Bar2 Green	0->255	
9	Bar2 Blue	0->255	
10	Bar2 White	0->255	
11	Strobe	0->5 Open 6->10 Open (Dimmer Fade OFF) 11->105 Pulse Strobe, from slow to fast (0~20Hz) 106->110 Open (Dimmer Fade OFF) 111->179 Thunder Strobe (0~10Hz) 180->185 Open (Dimmer Fade OFF) 186->253 Random Strobe, from slow to fast 254->255 Open (Dimmer Fade ON)	
12	Ctrl	0->255 Reserved	

4 /Display panel operational function detail

FINE150 FT IP:

First Level	Second Level	Third Level	Option/Value	Default	Description
Address	DMX Addr		1->512	1	DMX Address
Option	Ch Mode		Stand 16/SIMP 10/ Pixels 20	Stand16	Channel Mode
	PowerMode		Power/Stand/ Theater	Stand	It is maximum power and noise when the value is Power; It is 85% power and lower noise when the value is Stand; It is 70% power and lowest noise when the value is Theater;
	DimmCurve		Default/Power2/ Power3	Default	
	DimmFreq		1.2K/6K/12K/24K	1.2K	Dimmer frequency
	Master_Mode		Slave/Master	Slave	
	Present		Effect1/Effect2/ Effect3/Effect4	Effect1	
Auxiliary	Language		CHS/ENG	CHS	Language
	BKLgtTime		30Sec/60Sec/ON	30Sec	Display Screen Background Lighting time
	Brightness		0-255	255	reserve
	BKWarn		ON/OFF	ON	Display Screen Background Lighting warning
	DispRev		Action	Action	Display Screen Reverse
	Config1		Load/Save	Load	User Config1 Load/Save
	Config2		Load/Save	Load	User Config2 Load/Save
Manual	ChannCtrl		Channel Function Manual Ctrl		Display Screen Reverse
	Reset				Reset
Info	Fixture		F 150FTIP		Device short name
	DispB Ver		V0.XX		Disp Board Version
	DispB Temp		40°C		Disp Board Temperature
	ManuID		05EF		Manufactory ID
	DeviceID		05EFxxxxxx		Device ID
	ErrorInfo				Error Information
	DMX VAL				DMX Value

FINE 75 FT IP:

FirstLevel	SecondLevel	ThirdLevel	Option/Value	Default	Description
Address	DMX Addr		1->512	1	DMX Address
Option	Ch Mode		Stand 16/SIMP10/ Pixels 12	Stand16	Channel Mode
	PowerMode		Power/Stand/ Theater	Stand	It is maximum power and noise when the value is Power; It is 85% power and lower noise when the value is Stand; It is 70% power and lowest noise when the value is Theater;
	DimmCurve		Default/Power2/ Power3	Default	
	DimmFreq		1.2K/6K/12K/24K	1.2K	Dimmer frequency
	Master_Mode		Slave/Master	Slave	
	Present		Effect1/Effect2/ Effect3/Effect4	Effect1	
Auxiliary	Language		CHS/ENG	CHS	Language
	BKLgtTime		30Sec/60Sec/ON	30Sec	Display Screen Background Lighting time
	Brightness		0-255	255	reserve
	BKWarn		ON/OFF	ON	Display Screen Background Lighting warning
	DispRev		Action	Action	Display Screen Reverse
	Config1		Load/Save	Load	User Config1 Load/Save
	Config2		Load/Save	Load	User Config2 Load/Save
Manual	KeyLock		ON/OFF	ON	KeyBoard Auto Lock
	ChannCtrl		Channel Function Manual Ctrl		Display Screen Reverse
Info	Reset				Reset
	Fixture		F75FTIP		Device short name
	DispB Ver		V0.XX		Disp Board Version
	DispB Temp		40°C		Disp Board Temperature
	ManuID		05EF		Manufactory ID
	DeviceID		05EFxxxxxx		Device ID
	ErrorInfo				Error Information
DMX VAL				DMX Value	

5 /Control Panel

5.1 Control panel introduction

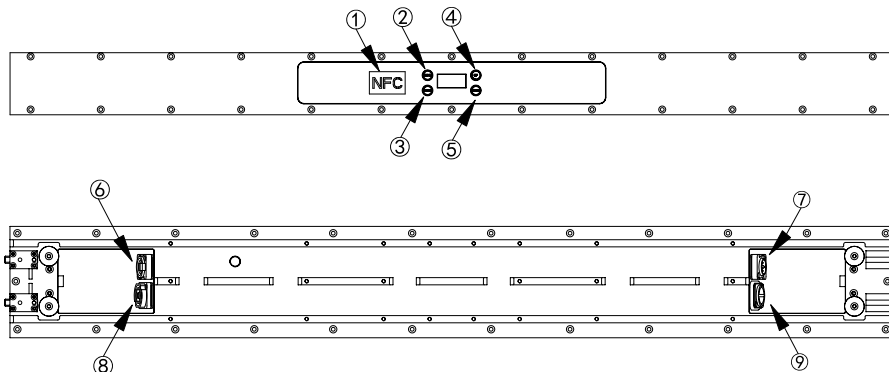
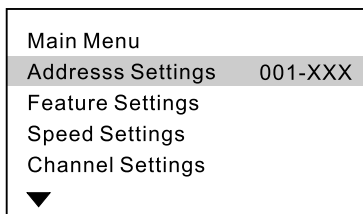


Figure (5.1-1)

- | | | |
|---------|--------------|----------------|
| 1.NFC | 4.UP | 7.DMX input |
| 2.Menu | 5.Down | 8.Power output |
| 3.Enter | 6.DMX output | 9.Power input |

5.2 Control panel operational introduction

Main Menu interface



Note: Enter the main menu interface (the gray area indicates the selected menu), if you are sure to enter this menu, press the menu key, the up/down key can turn the page, and the confirm key can select the required function settings.

6/Routine maintenance

This fixture requires routine cleaning. The service life depends on the operating environment heavily. Please kindly contact GUANGZHOU CHAIYI LIGHT CO., LTD for more maintenance information not included in this user's manual.

Notice: Excessive dust, smoke fluid and particulate buildup will degrade performance and cause over heating or damage to the fixture that is not covered by the warranty.

Warning: Please unplug the fixture before you open any covers.

Cleaning

Optical components should be cleaned carefully and lightly. Coating face is easily damaged, do not use harmful solvent so as to avoid damage to plastic parts or coating parts.

Cleaning optical components

1. Switch off the fixture and keep it cool completely, then open the cover.
2. Clean the floats by dust collector or compressed.
3. Use cotton paper without smell or cotton cloth soaked with the water, distilled water to wipe the granular thing, don't wipe the surface, float things should be blown away by the pressure gas.
4. Use the cotton cloth or cotton paper without smell soaked with isopropyl alcohol to remove the smoke and other residues. A commercial glass cleaner may be used, but residues must be removed with distilled water. Clean with a slow circular motion from center to edge. Dry with a clean, soft and lint-free cloth or compressed air.

Cleaning fan and air vents

Remove dust from the fans and air vents with a soft brush, cotton paper, vacuum, or compressed air.

7 / Safety information

The following symbols are used to identify important safety information on the product and in this manual.



DANGER!
Safety hazard.
Risk of severe injury or death.



DANGER!
Refer to manual before installing, powering or servicing.



DANGER!
Hazardous voltage. Risk of severe or lethal electric shock.



Warning!
Fire hazard.



Warning!
Burn hazard. Hot surface. Do not touch.



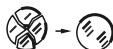
Warning!
Risk of eye injury. Safety glasses must be worn.



Warning!
Do not stare at the bulb which is still on.



Warning!
Risk of hand injury. Safety gloves must be worn.



Replace any cracked protective shield.



Minimum distance from lighted objects is 0.5m.



For indoor use only.



Do not direct lens to sun ray or strong light!



Do not actuate during operating.



Luminaries not suitable for direct mounting on normally flammable surfaces (suitable only for mounting on non-combustible surfaces)

$t_c \dots \text{°C}$

$t_a \dots \text{°C}$

The surface's temperature is 80°C.

Rated maximum ambient temperature is 40°C.



Protection against explosion

Protection screen must be replaced if they have become visible damaged to such an extent that their effectiveness is impaired.



Protection against burning or fire

Keep flammable materials far away from the fixture. Minimum distance from the flammable materials is 0.5m.

8 /Product Connection

8.1 Included items

The fixture is packed with flight case. FINE 150 FT IP comes standard with one pack of five, FINE 75 FT IP comes standard with one pack of ten. (shown as table 8.1-1):

Accessories	150FT IP(QTY)	75FT IP(QTY)	UNIT
User manual	1	1	PCS
Warranty card	1	1	PCS
Suspension fasteners	2	1	SET
Signal cable	1	1	PCS
Safety wire	1	1	PCS

Table (8.1-1)

8.2 Power connection

Notice: Type X attachment for power supply connection. Method of attachment of the cable or cord such that any replacement can only be made by the manufacturer, his service agent or similarly qualified person.

The person must have the relevant qualification to connect the power supply. The AC power voltage shall be suitable to the lamp provided with over-loading or creepage protection.

Connecting the equipment to the power supply, do not connect to silicon box system, or else, it will destroy the equipment.

1. The fixture is provided with standard 3-pin socket. Please according to table (8.2-1) connect to power supply, Yellow/green line must be earthed.


Color	Wire	Mark
Brown	Live	L
Blue	Neutral	N
Yellow/Green	Earth	

Table (8.2-1)

8. 3 Signal connection

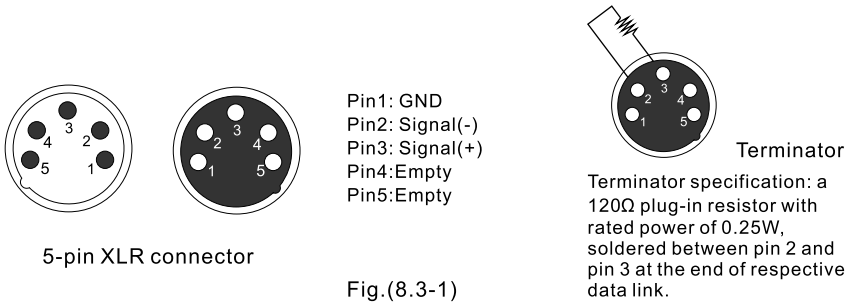
Data linkage for the fixture may be provided by DMX512 connection and NFC.

■ DMX connection

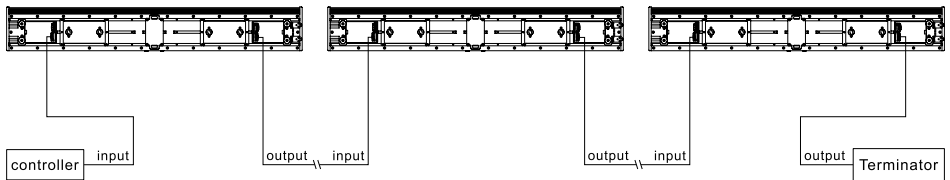
Note: The signal cable was type X connection.

Type X connection—if the external flexible cable or cord of this fixture is damaged, it shall be replaced by a special cord or cord exclusively available from the manufacturer or his service agent.

3-pin or 5pin XLR connectors are provided for fixture DMX input and output. Pin 1 is for earthing, pin 2 is for minus signals, and pin 3 is for plus signals.



Connect the fixtures with Max.25 pieces. Make sure to insert the “signal in” terminal in the last connecting fixture. shown in Fig.(8.3-2).



If long-distance data transfer occurs, a DMX512 signal amplifier is necessary. The added amplifier is inserted between the lighting controller and the first fixture on the basis of a normal data link.



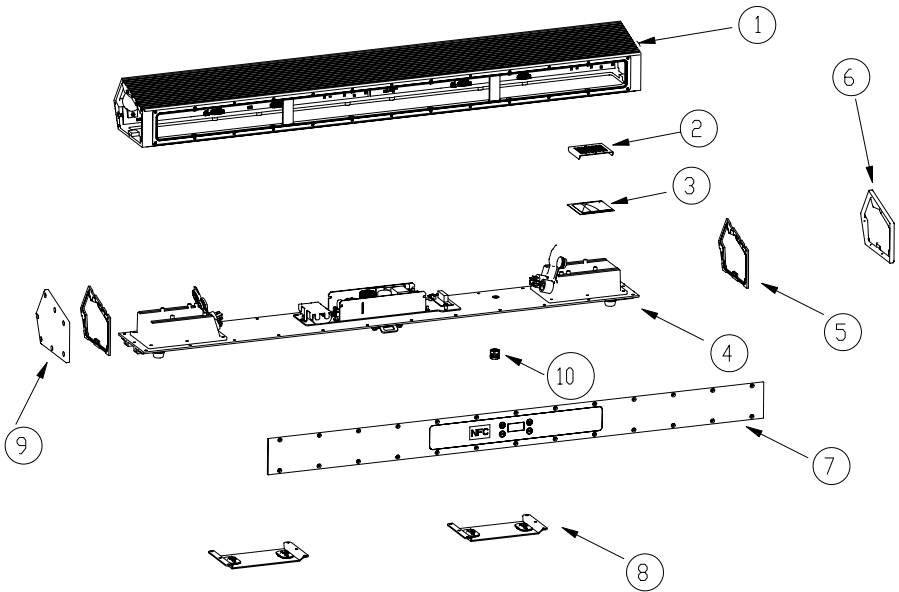
Notice!

1. No more than one signal input or output can occur in one fixture.
2. Don't split a data link via output ports on the fixture, use a DMX512 signal amplifier instead, if necessary.
3. Use only shielded-pair cables, and standard microphone cable is not reliable for long-distance data transfer.

9 /Parts Code

NO.	Item	Specification	Ording index
1	LED Bead Board	—	330712100234
2	Drive Board	—	330712100237
3	Tempered Glass	—	200712000105
4	Reflector	—	200710000038
5	Switch Power Supply	—	330001200044
6	DMX Protection Board	—	330712100224
7	Waterproof Locking Power Connector Female Socket	—	300402000062
8	Waterproof Locking Power Connector Male Socket	—	300502000031
9	5-pin Waterproof Cannon Male Socket	—	300502000023
10	5-pin Waterproof Cannon Female Socket	—	300502000024
11	Display Board Glass	—	200730000016
12	Display Board	—	330712100220
13	Display Adapter Board	—	330712100221
14	NFC Module	—	330724100005

Attached 1: Fixture exploded drawing



1. Color Light Main Parts Assembly
2. Desiccant Fixed Board
3. Silica Gel Desiccant
4. Base Board Assembly
5. Side Silicone

6. Side Cover
7. Front Panel
8. Light Hook Fixing Panel
9. Side Cover2
10. Screw Type Respirator